



# Roadmap

13 June 2019

Michael Taylor, Product Manager

# Initiatives


- Supporting Uniface 10 Community
- Dynamic server pages
- Cloud
- Security
- Currency
- Product quality

# Supporting Uniface 10 community


- Productivity
  - IDE enhancements
- E-Learning
- Community edition

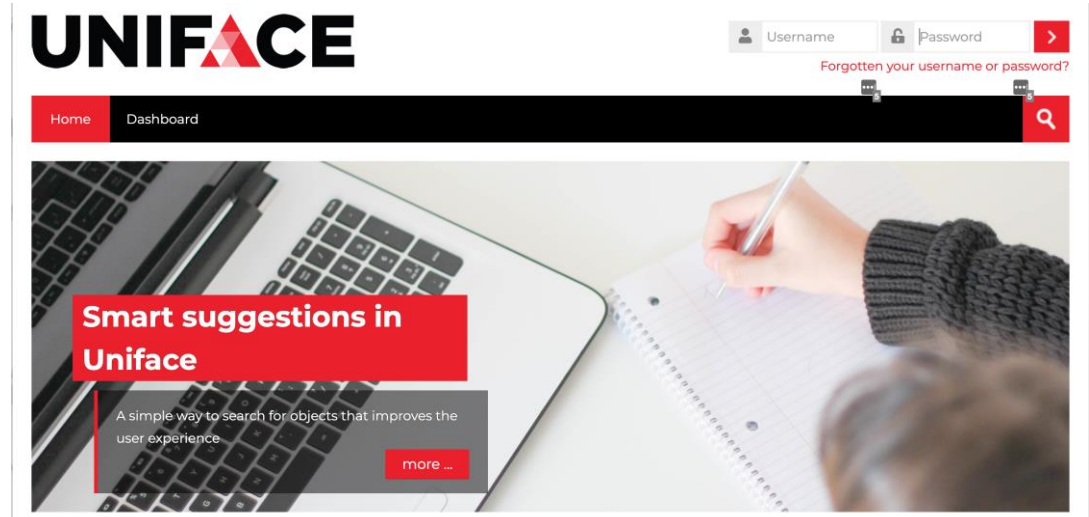


# Productivity

- Navigate to code container ✓
- Regular expression find/replace ✓
- Smart Suggestions
  - U-Bar ✓
  - Object renaming ✓
  - Property updates ✓
  - Resource browsers 
- Fast Form/Load Fields
- Code editor
  - functionality
  - productivity enhancements
- Work Area Support

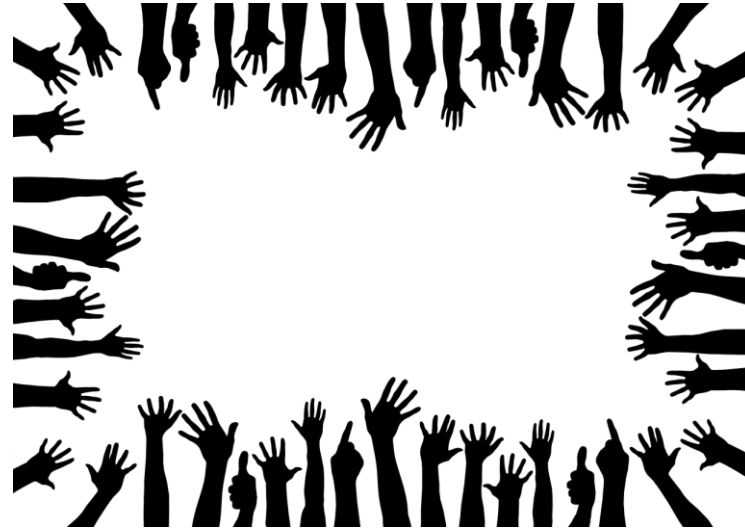
# E-Learning

- Create and brand E-Learning infrastructure ✓
- Create core learning modules 
- Create web development learning modules
- Enable self-registration by prospective students
- Create desktop development learning modules
- Create mobile development learning modules
- Create environment management learning modules
- Create certification paths



# Community Edition


- Replace Distributed License Manager 
  - Perpetual license
  - Simple installation
- Limit scalability
- Improve installation experience



# Web Development

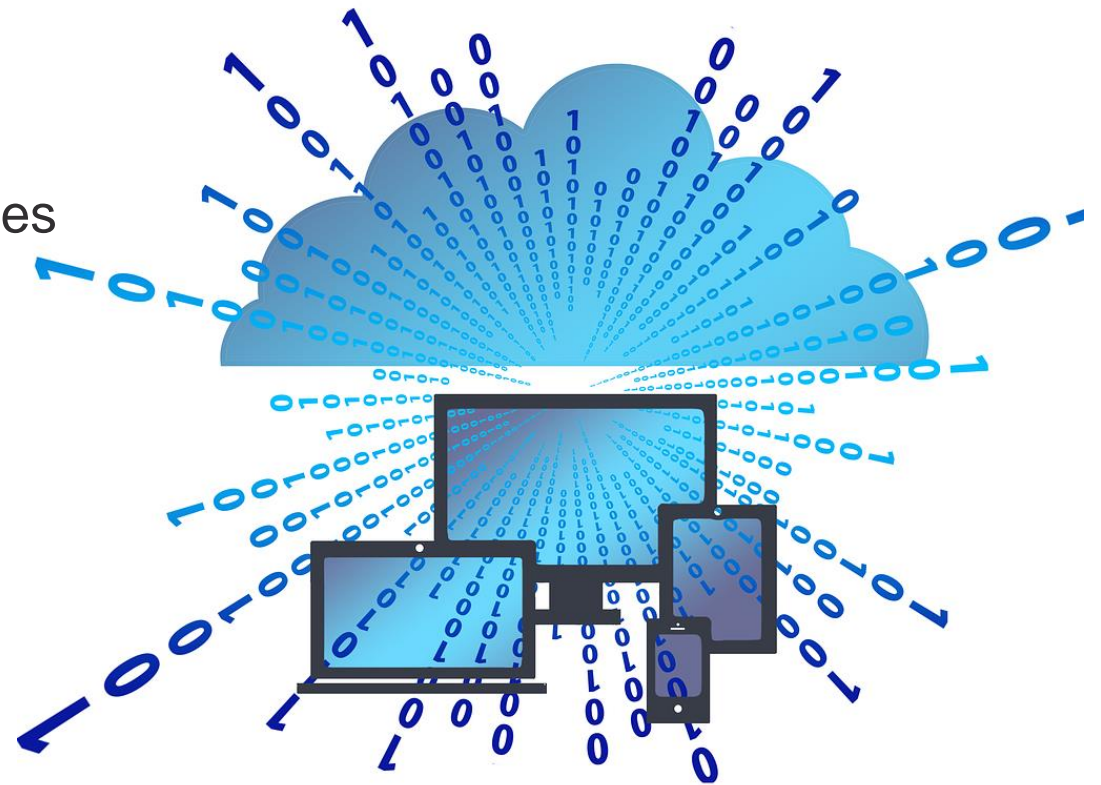
---



- Flexible date and time entry with NLS 
- Consistent client-side handling of client and server errors, validation and other
- NLS number entry and formatting


# Cloud

- AWS/Azure Linux based machines ✓
- AWS/Azure Windows-based machines ✓
- Docker support
- Uniface Docker containers in public repositories





# Security

- Transport Layer Security (TLS)
  - Client-Server ✓
  - Web (WRD) ✓
  - PostMessage ✓
  - Urouter Monitor
  - Debugger
- Memory Management 
- UPOPMAIL
- LDAP





# Currency

- OpenJDK 8/11 ✓
- Windows server 2019 ✓
- iSeries (AS/400) 7.3 ✓
- PostgreSQL v10 & v11 ✓
- Oracle 18c ✓
- Oracle 19c ⚙️
- Informix CSDK 4.1 on AIX ⚙️
- XCode 10.2 ⚙️
- Cordova 9 ⚙️
- Sybase 16 on SUSE Linux 12
- RedHat Linux 8
- Informix CSDK 4.5 on Windows
- IBM AIX 7.2
  - Informix CSDK 4.5

# Product quality

---



- Build/Test times
  - Cloud testing
  - Test isolation / Parallel testing
  - Kubernetes
- Ranorex Upgrade

A large, irregular red ink splatter or blotch is centered on a white background. The splatter has a dark red core that fades to a lighter red at the edges, with numerous small red droplets and speckles scattered around it. The overall effect is that of a fresh ink spill.

**Questions?**



**Thank you**

