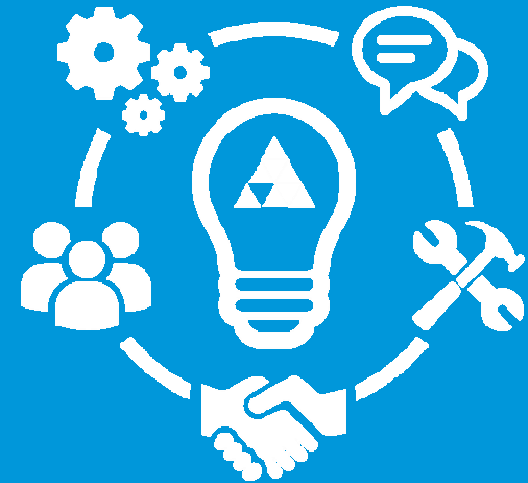


# Uniface Road Map and Product Update

Michael Taylor  
Product Manager

December 1, 2015

**UNIFACE**  
Advanced Development Technology



# Agenda

- Reengineering the lab
- Uniface 9.7
- Uniface 9.6
- Uniface Anywhere
- Uniface 10

# Reengineering the Uniface Lab



- Future proof, Increase productivity (and reduce frustration)
- Update/replace existing systems
- Move to a continuous build and integration approach
- Automate more activities



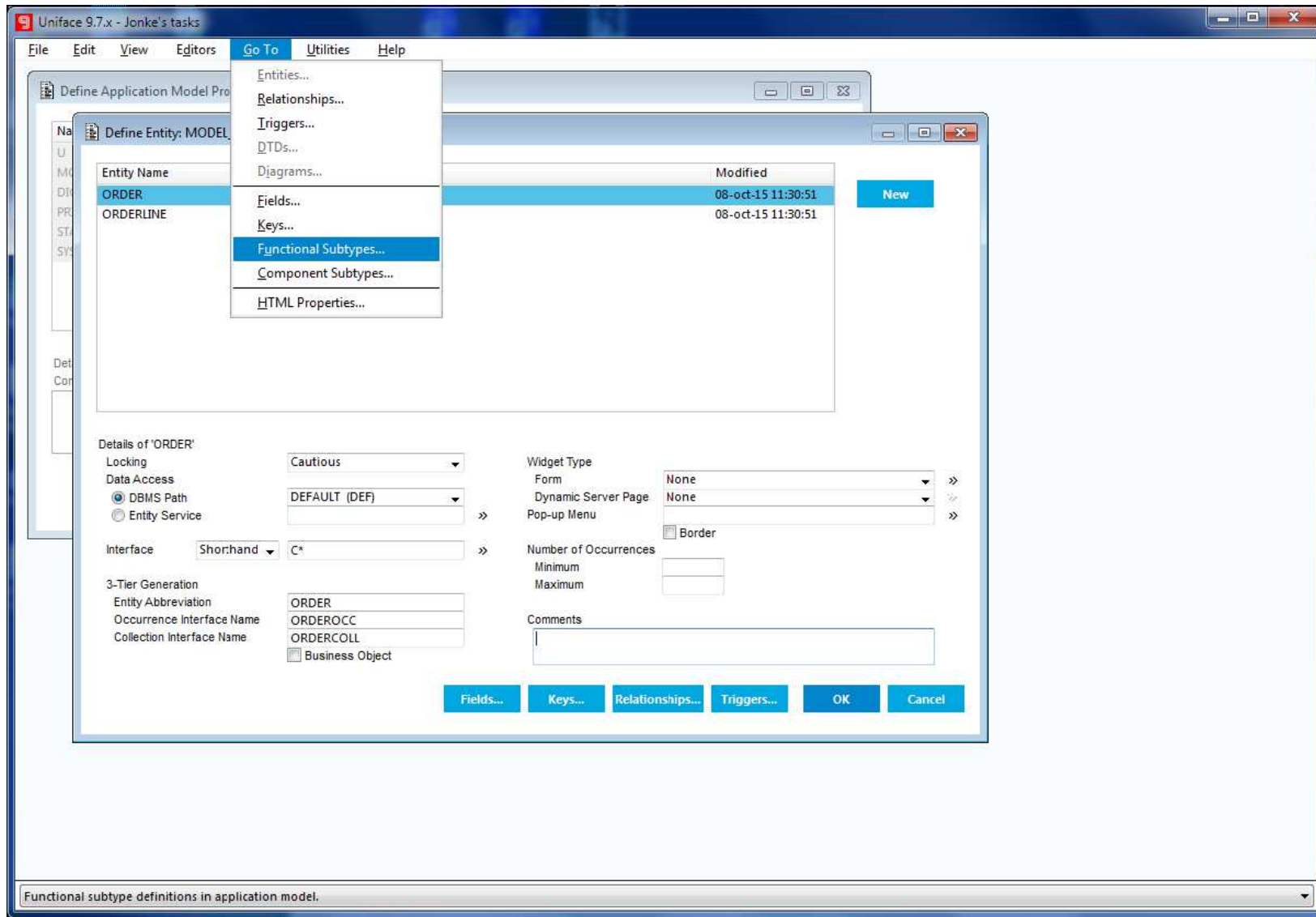
# 9.7 Themes

- Improved developer experience (Theo)
- Client server enhancements (Jasper)
- Mobile Development
- Web development enhancements
- Integration
- Currency

# Improved Developer Experience

The screenshot displays the Uniface 9.7.02 Development Environment. A window titled 'UNIFACE SHORTCUTS' is open, showing a list of application model definitions. The window has a menu bar with 'File', 'Edit', 'View', 'Editors', 'Go To', 'Utilities', and 'Help'. On the left side of the window, there are five large colored buttons: 'Mobile' (red), 'Web' (blue), 'Desktop' (orange), and 'Integration' (green). The main area of the window is divided into two panes. The left pane contains a list of shortcuts with descriptions, including 'Model', 'Startup Shell', 'Dynamic Server Page', 'Static Server Page', 'Service', and 'Uniface Community'. The right pane is a table titled 'Define or edit Application Model definitions'.

Type	Shortcut	Description	Creation Time
	ENT_1	Define Field: ENT_1.MODEL_1	21-sep-15 10:22:34
	MODEL_1	Define Entity: MODEL_1	21-sep-15 10:22:40
	MODEL_1	Define Relationship: MODEL_1	21-sep-15 10:23:07
	ENT_1	Define Key: ENT_1.MODEL_1	21-sep-15 10:23:13
	APS_1	Define Start-up Shell Properties: APS_1	21-sep-15 10:23:51
	FORM_1	Form Component Editor: FORM_1 (Form)	21-sep-15 10:24:15
	REPORT_1	Report Component Editor: REPORT_1 (Report)	21-sep-15 10:24:30
	SERVICE_1	Service Component Editor: SERVICE_1 (Service)	21-sep-15 10:24:47
	USP_1	Static Server Page Component Editor: USP_1 (Static Server Page)	21-sep-15 10:25:15
	DSP_1	Dynamic Server Page Component Editor: DSP_1 (Dynamic Server Page)	21-sep-15 10:25:37
	SIGN_1	Define Signature: SIGN_1	21-sep-15 10:26:21
	SYSTEM_LIBRARY	Define Counter: SYSTEM_LIBRARY	21-sep-15 10:29:02
	DEV_C_1	Define Device Translation Table: DEV_C_1. SYSTEM_LIBRARY	21-sep-15 10:29:23
	KEY_C_1	Define Keyboard Translation Table: KEY_C_1. SYSTEM_LIBRARY	21-sep-15 10:29:48
	SESSVC_1	Session Service Component Editor: SESSVC_1 (Session Service)	21-sep-15 10:34:48
	ENTSV_C_1	Entity Service Component Editor: ENTSVC_1 (Entity Service)	21-sep-15 10:35:04
	GPROC_1	Define Global Proc: SYSTEM_LIBRARY	21-sep-15 10:35:53
	SYSTEM_LIBRARY	Define Global Variable: SYSTEM_LIBRARY	21-sep-15 10:36:12
	SYSTEM_LIBRARY	Define Global Constant: SYSTEM_LIBRARY	21-sep-15 10:36:26
	INCL_1	Define Include Proc: SYSTEM_LIBRARY	21-sep-15 10:36:55
	SYSTEM_LIBRARY	Define Message: SYSTEM_LIBRARY	21-sep-15 10:37:08



- If it is in the documentation, it is supported.

# Client Server Enhancements

- Quality enhancements through the MSAA (Microsoft Active Accessibility) API
  - Enable in .ini file
  - EditBox, CommandButton, CheckBox are supported
  - Others widgets are visible
  - If it is in the documentation, it is supported.



# Mobile three phases

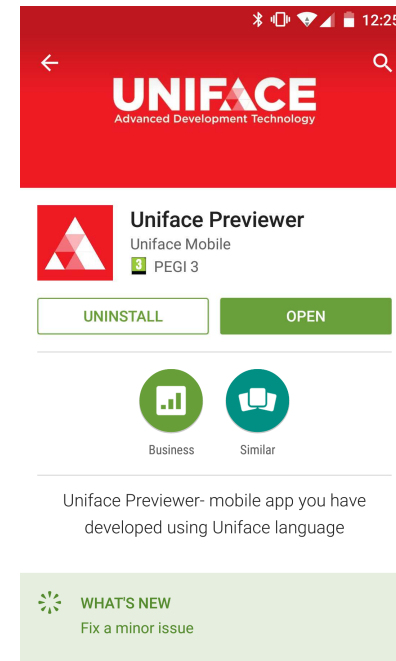
- Mobile Web Apps
- Installable
- Off-Line



# Mobile Development



- Develop and deploy cross-platform, responsive mobile apps.
  - Hybrid Solution – HTML5/JavaScript based
- Rapidly prototype mobile apps
  - Previewer app available in the App Store and Google Play
    - Contacts
    - Barcode
    - Camera
    - Geo-Location



# Web development enhancements

- Create best of
- Default widget
- Simplified asyn
- Simplified Integ
- Control presen
- Browser indepe
- Control the loa
- Run “headless”

The screenshot shows a web form titled "Event" within a "Uniface" header. The form contains several input fields: a text field with "North American Uniface User Group", a larger text area with "Vdara Hotel & Spa, 2600 W. Harmon Avenue, Las Vegas, NV 89158", a date field with "05/10/2014", and a small number field with "4". Below these is a "Languages" section with a plus icon and a list of items: "Bar Vdara", "Cosmopolitan's WICKED SPOON", "SIRIO Ristorante located at ARIA", "Silk Road 1", and "Silk Road 2".

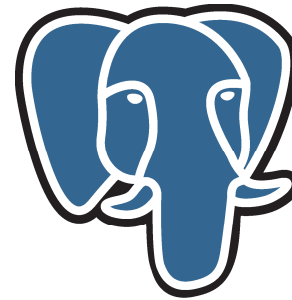
ses  
networks  
lication data  
esigns  
files  
Devices

# Integration

- Extended web services capabilities
  - Maximum parameter size increased
  - Improved wsdl import
- Utilize web storage using UHTTP
  - Get and send binary files
  - Improved error reporting
- External webpage integration facilitates
  - Communications between website and server
- Integration through RESTful web services
  - Semantic URLs

# Currency

- Windows 10
- Databases
  - SAP HANA
  - PostgreSQL
- Environment
  - JAVA 1.8
  - Tomcat 8
- IE 11



PostgreSQL  
the world's most advanced open source database



# Uniface 9.6

- Uniface 9.6.08 maintenance pack scheduled for December
  - Delivers Windows 10 support for Uniface 9.6
  - Older versions of Uniface could run into issues if deployed on Windows 10
- Uniface 9.6 is now in maintenance mode.
- End of support March 2017  
(18 months after the release of Uniface 9.7).



- Uniface Anywhere is rebranded Uniface JTi
  - Uniface Anywhere 4.8 is the current version
- Early 2016 will deliver v5
  - Complete server Windows theme support
  - High resolution display support
    - inherit the clients DPI attributes
  - Full Windows desktop support option
    - Start menu, task bar, etc
  - Improved audio with full sound support
  - Client to host reconnect capabilities

# What comes next! – Our thinking

- Uniface 9.7
  - Uniface 9.7.02 update in early 2016
  - Integration to a mobile build service
    - Generate mobile apps
    - Distribute Uniface mobile apps to the App Store/Google Play
  - Ongoing web enhancements
    - End user error handling enhancements
    - Composable DSPs
  - Client Server enhancements
    - 64 bit HTML control
    - Extending MSAA coverage
  - Currency
    - Informix 4.x SDK
    - SAP Adaptive Server 16 (formerly Sybase)



**Informix**<sup>®</sup>

**SAP**<sup>®</sup> **ASE**

**UNIFACE**  
Developer Conference

# UNIFACE 10

## Phased release schedule based on Editions

**UNIFACE 10**  
Web Edition

Early adopters – released April 2015  
Update planned December 2015

**UNIFACE 10**  
Mobile Edition

*Planned for 2016*

**UNIFACE 10**  
Enterprise Edition

*Planned for 2016*





# UNIFACE 10 Our thinking

## Web Edition

- Uniface 10.1 early adopters release
  - First released in April 2015
  - Available via Uniface.info or Uniface.com
- Second update planned for December
  - Will include some central object support
    - Include proc, messages
  - First phase of version control
    - Collect development objects into a work area
    - Entity level export granularity

**Thank You!**

Q&A

**UNIFACE**

Advanced Development Technology

# Follow us online



[uniface.com](http://uniface.com)